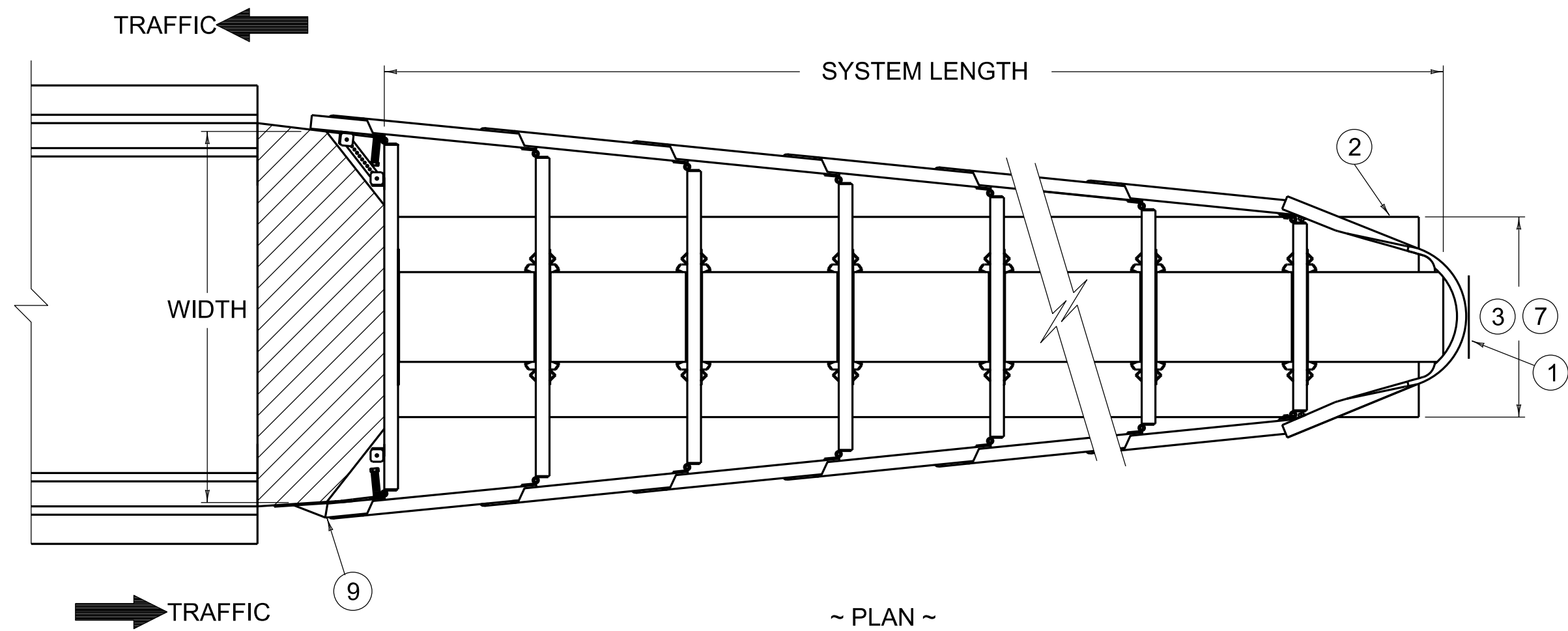


CLASS	SPEED (MPH)	ATTENUATOR				SYSTEM LENGTH	SUGGESTED AADT* RANGE (P.C.P.L.) **
		MODEL	PRODUCT NAME	MANUFACTURER	WIDTH		
B	45 & LESS	TL3	QUADGUARD M WIDE	VALTIR OF DALLAS, TEXAS	69"	22' - 0"	UP TO 12,000
C	OVER 45	TL3	QUADGUARD ELITE M10 WIDE	VALTIR OF DALLAS, TEXAS	69"	27' - 1"	8,000 AND OVER

\* ANNUAL AVERAGE DAILY TRAFFIC  
\*\* PASSENGER CARS PER LANE



~ NOTES ~

- 1 NOSE ASSEMBLY (OBJECT MARKER TYPE 3 AS REQUIRED).
- 2 6" CONCRETE PAD PER MANUFACTURER SPECIFICATIONS.
- 3 THE CONCRETE PAD, PAD EXCAVATION AND STEEL REINFORCEMENT, INSTALLED IN PLACE SHALL BE INCLUDED IN THE UNIT PRICE BID FOR CRASH CUSHION TYPE VI. DIMENSION AND REINFORCEMENT SPECIFICATIONS FOR CONCRETE PADS ARE TO BE PROVIDED BY THE MANUFACTURER. THE PAD WILL NOT BE REQUIRED WHEN THE UNIT IS CONSTRUCTED ON RIGID PAVEMENT.
4. THE CROSS SLOPE ON THE PAD OR PAVEMENT SHALL BE PER MANUFACTURER SPECIFICATIONS.
- 5 WHEN INSTALLED ON A STRUCTURE, DETAILS FOR ANCHORAGE SHALL BE DEVELOPED AND SHOWN ELSEWHERE ON THE PLANS.
6. SPECIAL WIDTH UNITS ARE AVAILABLE FROM THE MANUFACTURERS. WHEN SPECIAL WIDE UNITS ARE REQUIRED DETAILS OF THE UNIT SHALL BE DEVELOPED AND SHOWN ELSEWHERE ON THE PLANS.
- 7 CRASH CUSHIONS ARE TO BE INSTALLED PER MANUFACTURER SPECIFICATIONS, INCLUDING THE CONCRETE PAD. SEE QR CODE ON THIS SHEET FOR LINK TO MANUFACTURERS INSTALLATION MANUAL.
8. CONCRETE PAD AND BELOW GRADE ANCHOR SHALL BE PLACED MONOLITHICALLY.
- 9 END SHOE MAY BE ELIMINATED WITH ONE WAY TRAFFIC.
10. THE CRASH CUSHION TYPE 7 MAY ALSO BE UTILIZED FOR TEMPORARY USE AND CONSTRUCTION ZONES (CLASS BT).
11. A CRASH CUSHION TYPE 7 CLASS B IS TO BE USED IN AREAS WHERE CRASH HISTORY IS NOT KNOWN TO BE SEVERE.
12. A CRASH CUSHION TYPE 7 CLASS C IS CONSIDERED A SEVERE USE CRASH CUSHION.

BID ITEMS AND UNIT TO BID:

CRASH CUSHION TYPE 7 CLASS B   EACH

 CLASS B OR C , AS REQUIRED.

 TEST LEVEL 2 (TL2) OR TEST LEVEL 3 (TL3), AS REQUIRED.

OBJECT MARKER TYPE 3 (AS REQUIRED) EACH



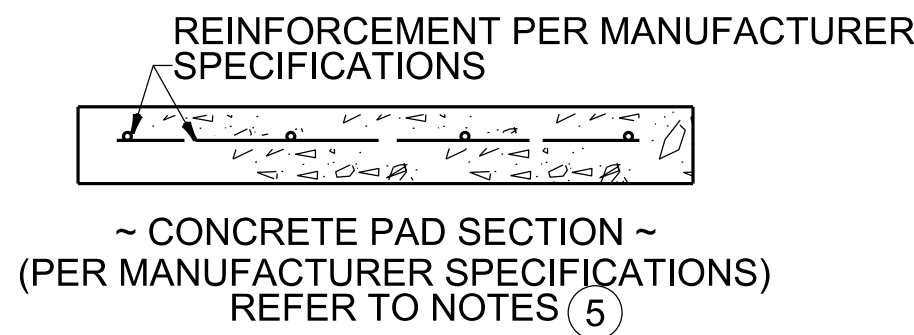
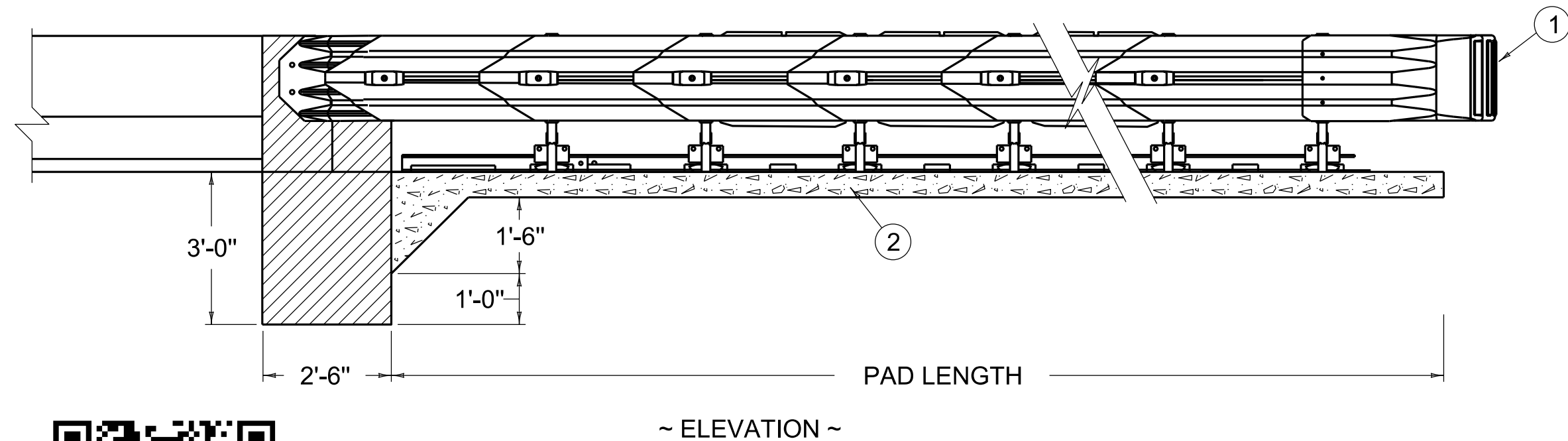
VALTIR  
QUADGUARD ELITE  
M10 WIDE



VALTIR  
QUADGUARD M WIDE

THIS STANDARD DRAWING  
PROVIDES GUIDANCE ONLY.  
CONSULT THE MANUFACTURER  
FOR THE LATEST DETAILS AND  
INSTALLATION INSTRUCTIONS.

SCAN THE QR CODES TO ACCESS THE MANUFACTURER'S ASSEMBLY INSTRUCTIONS FOR THE CRASH CUSHIONS.



SUBMITTED W. J. Lujan 08-11-2025 DATE  
DIVISION DIRECTOR  
APPROVED John Bellinger 08-11-2025 DATE  
STATE HIGHWAY ENGINEER

BARRIERS

REVISION DATE: 08/11/2025  
REVISION NUMBER: 0



COMMONWEALTH OF KENTUCKY  
DEPARTMENT OF HIGHWAYS



CRASH CUSHION

CRASH CUSHION TYPE 7 CLASS B AND C  
(ONE AND TWO DIRECTION)

STANDARD DRAWING NUMBER  
RBE-040-12